



SUSTAINABLE.

Reinforced concrete design is resistant to fire, sound, mold, moisture, and can withstand nature's elements.

ENERGY-EFFICIENT.

Reduces cost of construction. Accelerated installation. Tall-wall solutions. Energy-efficient buildings.

FLEXIBLE.

Suitable for all project sizes and building types with limitless design possibilities.

PRODUCT SPECS:

PS3000 Waffle grid: 16" High by 48" Long, steel webs @ 12" o.c.

Form concrete walls 4", 6", 8" and 10" thick

PS4000 Flat wall: 24" High by 48" Long, steel webs @ 6" o.c.

Form concrete walls 6" and 8" thick

PolyPro Knock Down flat wall: 24" High by 48" Long, plastic webs @ 6" o.c.

Form concrete walls 4" to 24" thick

PolySteel Benefits

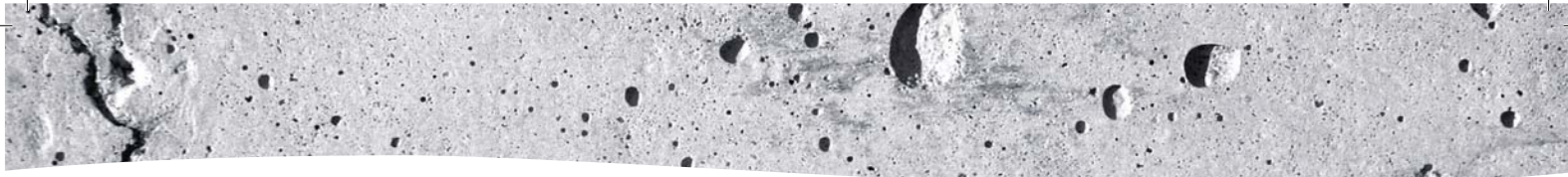
- Cradle to Cradle certification
- Tongue and groove interlocking system
- Contributes to and enhances the evaluation towards – Leadership in Energy and Environmental Design (LEED®) credits, as well as other building green standards



ARXX™

www.arxx.com

POLYSTEEL TSFLYER 0109



Sustainability is in our nature.

Conserving the environment with energy-efficient building solutions.



www.arxx.com